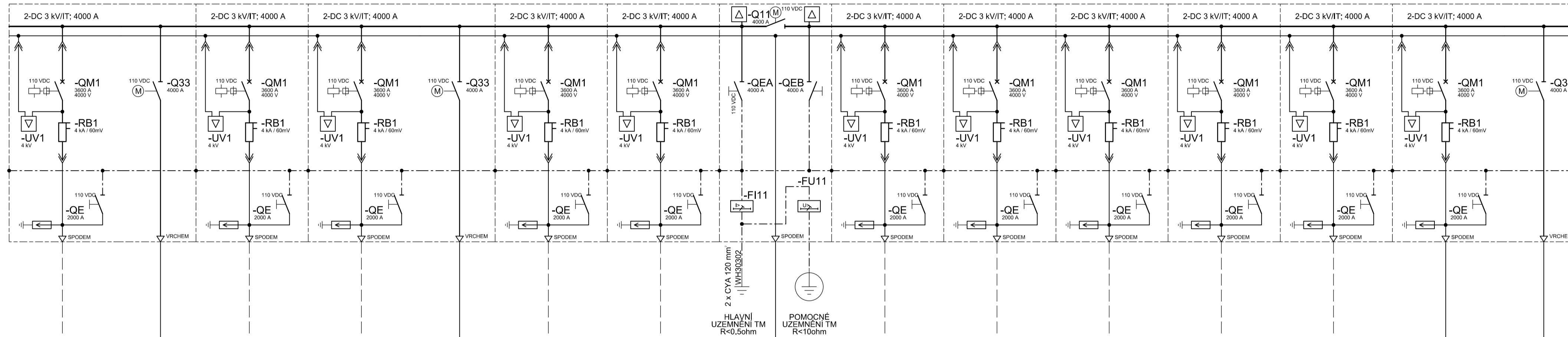
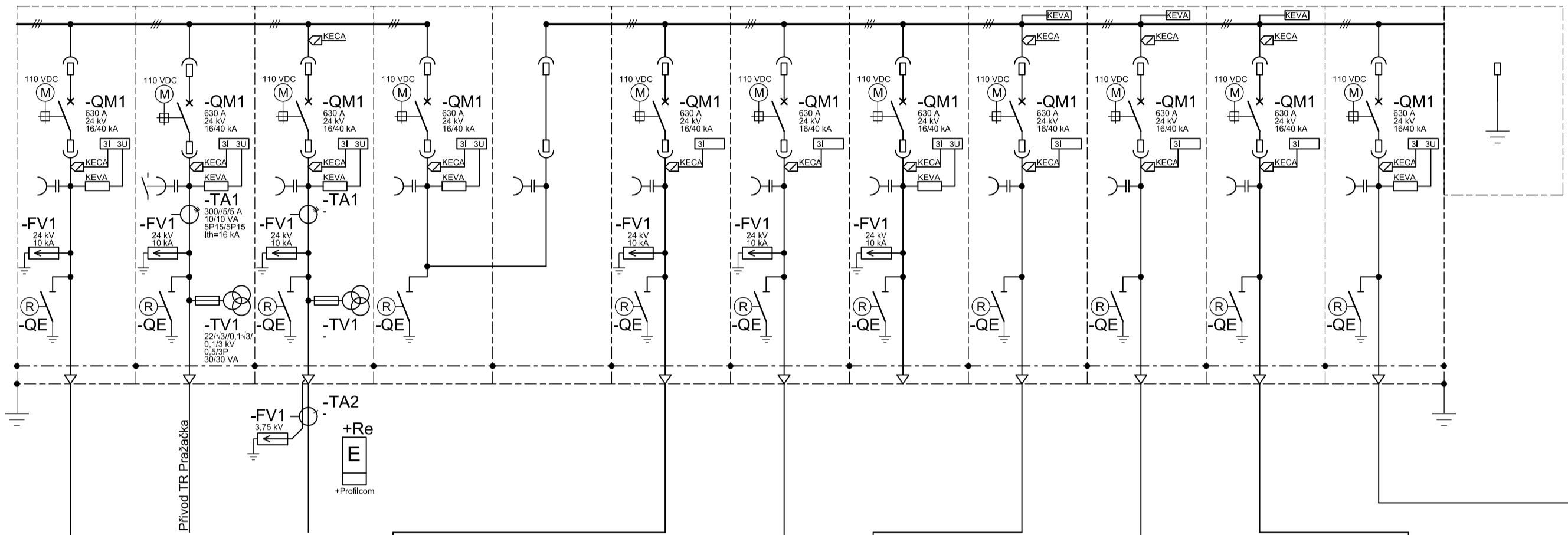
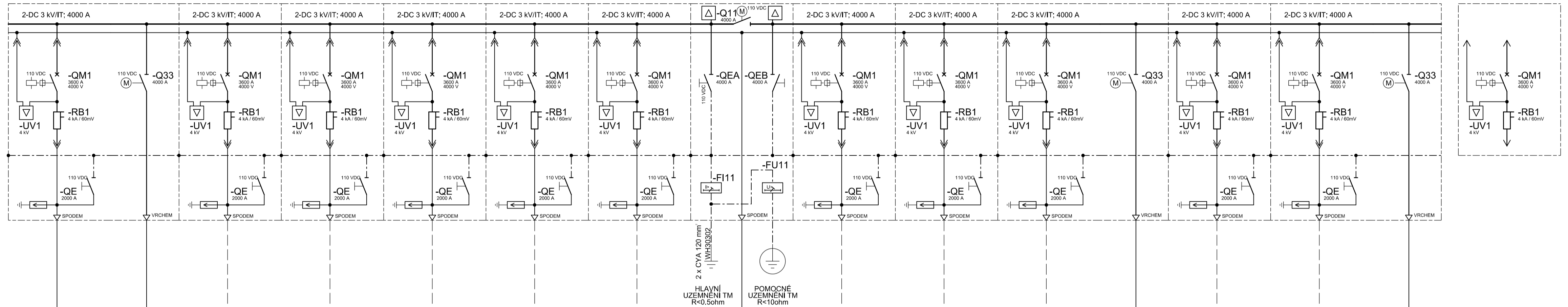
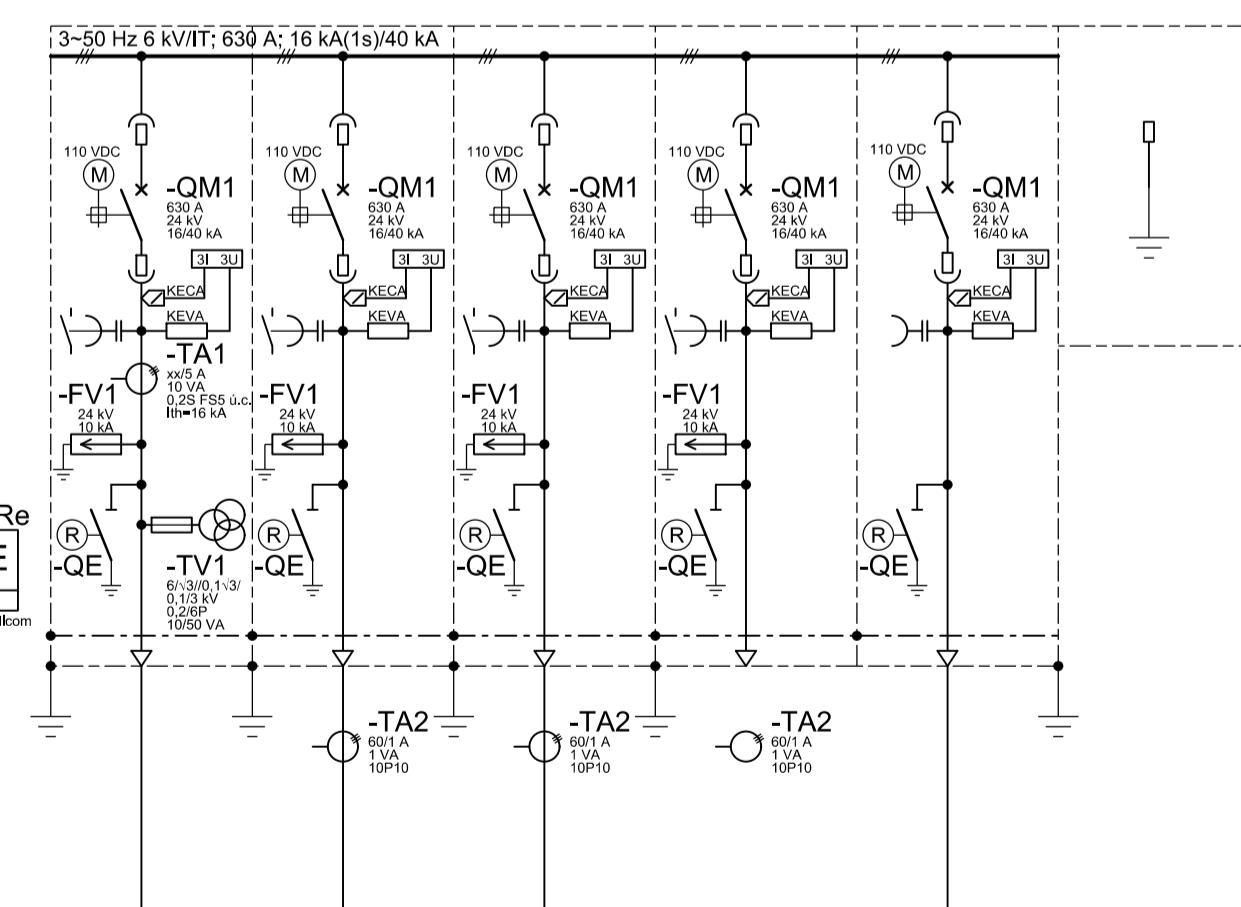


[illegible][illegible]

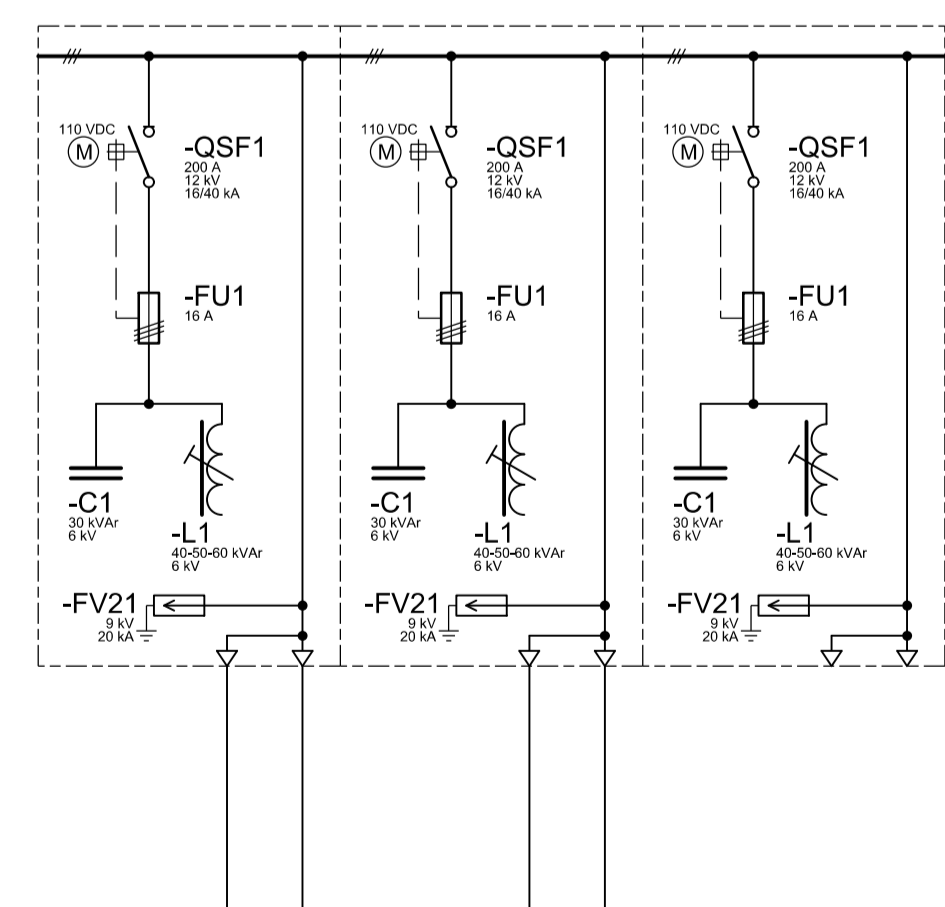
	ASM16	ASM17	ASM18	ASM19	ASM20	ASM21	ASM22	ASM23	ASM24	ASM25	ASM26	ASM27	ASM28	ASM29	ASM30	ASM31	ASM32	ASM33	ASM34	ASM35	ASM36	ASM37	ASM38	ASM39	ASM40	ASM41	ASM42	ASM43	ASM44	ASM45	ASM46	ASM47	ASM48	ASM49	ASM50	ASM51	ASM52	ASM53	ASM54	ASM55	ASM56	ASM57	ASM58	ASM59	ASM60	ASM61	ASM62	ASM63	ASM64	ASM65	ASM66	ASM67	ASM68	ASM69	ASM70	ASM71	ASM72	ASM73	ASM74	ASM75	ASM76	ASM77	ASM78	ASM79	ASM80	ASM81	ASM82	ASM83	ASM84	ASM85	ASM86	ASM87	ASM88	ASM89	ASM90	ASM91	ASM92	ASM93	ASM94	ASM95	ASM96	ASM97	ASM98	ASM99	ASM100	ASM101	ASM102	ASM103	ASM104	ASM105	ASM106	ASM107	ASM108	ASM109	ASM110	ASM111	ASM112	ASM113	ASM114	ASM115	ASM116	ASM117	ASM118	ASM119	ASM120	ASM121	ASM122	ASM123	ASM124	ASM125	ASM126	ASM127	ASM128	ASM129	ASM130	ASM131	ASM132	ASM133	ASM134	ASM135	ASM136	ASM137	ASM138	ASM139	ASM140	ASM141	ASM142	ASM143	ASM144	ASM145	ASM146	ASM147	ASM148	ASM149	ASM150	ASM151	ASM152	ASM153	ASM154	ASM155	ASM156	ASM157	ASM158	ASM159	ASM160	ASM161	ASM162	ASM163	ASM164	ASM165	ASM166	ASM167	ASM168	ASM169	ASM170	ASM171	ASM172	ASM173	ASM174	ASM175	ASM176	ASM177	ASM178	ASM179	ASM180	ASM181	ASM182	ASM183	ASM184	ASM185	ASM186	ASM187	ASM188	ASM189	ASM190	ASM191	ASM192	ASM193	ASM194	ASM195	ASM196	ASM197	ASM198	ASM199	ASM200	ASM201	ASM202	ASM203	ASM204	ASM205	ASM206	ASM207	ASM208	ASM209	ASM210	ASM211	ASM212	ASM213	ASM214	ASM215	ASM216	ASM217	ASM218	ASM219	ASM220	ASM221	ASM222	ASM223	ASM224	ASM225	ASM226	ASM227	ASM228	ASM229	ASM230	ASM231	ASM232	ASM233	ASM234	ASM235	ASM236	ASM237	ASM238	ASM239	ASM240	ASM241	ASM242	ASM243	ASM244	ASM245	ASM246	ASM247	ASM248	ASM249	ASM250	ASM251	ASM252	ASM253	ASM254	ASM255	ASM256	ASM257	ASM258	ASM259	ASM260	ASM261	ASM262	ASM263	ASM264	ASM265	ASM266	ASM267	ASM268	ASM269	ASM270	ASM271	ASM272	ASM273	ASM274	ASM275	ASM276	ASM277	ASM278	ASM279	ASM280	ASM281	ASM282	ASM283	ASM284	ASM285	ASM286	ASM287	ASM288	ASM289	ASM290	ASM291	ASM292	ASM293	ASM294	ASM295	ASM296	ASM297	ASM298	ASM299	ASM300	ASM301	ASM302	ASM303	ASM304	ASM305	ASM306	ASM307	ASM308	ASM309	ASM310	ASM311	ASM312	ASM313	ASM314	ASM315	ASM316	ASM317	ASM318	ASM319	ASM320	ASM321	ASM322	ASM323	ASM324	ASM325	ASM326	ASM327	ASM328	ASM329	ASM330	ASM331	ASM332	ASM333	ASM334	ASM335	ASM336	ASM337	ASM338	ASM339	ASM340	ASM341	ASM342	ASM343	ASM344	ASM345	ASM346	ASM347	ASM348	ASM349	ASM350	ASM351	ASM352	ASM353	ASM354	ASM355	ASM356	ASM357	ASM358	ASM359	ASM360	ASM361	ASM362	ASM363	ASM364	ASM365	ASM366	ASM367	ASM368	ASM369	ASM370	ASM371	ASM372	ASM373	ASM374	ASM375	ASM376	ASM377	ASM378	ASM379	ASM380	ASM381	ASM382	ASM383	ASM384	ASM385	ASM386	ASM387	ASM388	ASM389	ASM390	ASM391	ASM392	ASM393	ASM394	ASM395	ASM396	ASM397	ASM398	ASM399	ASM400	ASM401	ASM402	ASM403	ASM404	ASM405	ASM406	ASM407	ASM408	ASM409	ASM410	ASM411	ASM412	ASM413	ASM414	ASM415	ASM416	ASM417	ASM418	ASM419	ASM420	ASM421	ASM422	ASM423	ASM424	ASM425	ASM426	ASM427	ASM428	ASM429	ASM430	ASM431	ASM432
--	-------	-------	-------	-------	-------	-------	-------	-------	-------	-------	-------	-------	-------	-------	-------	-------	-------	-------	-------	-------	-------	-------	-------	-------	-------	-------	-------	-------	-------	-------	-------	-------	-------	-------	-------	-------	-------	-------	-------	-------	-------	-------	-------	-------	-------	-------	-------	-------	-------	-------	-------	-------	-------	-------	-------	-------	-------	-------	-------	-------	-------	-------	-------	-------	-------	-------	-------	-------	-------	-------	-------	-------	-------	-------	-------	-------	-------	-------	-------	-------	-------	-------	-------	-------	--------	--------	--------	--------	--------	--------	--------	--------	--------	--------	--------	--------	--------	--------	--------	--------	--------	--------	--------	--------	--------	--------	--------	--------	--------	--------	--------	--------	--------	--------	--------	--------	--------	--------	--------	--------	--------	--------	--------	--------	--------	--------	--------	--------	--------	--------	--------	--------	--------	--------	--------	--------	--------	--------	--------	--------	--------	--------	--------	--------	--------	--------	--------	--------	--------	--------	--------	--------	--------	--------	--------	--------	--------	--------	--------	--------	--------	--------	--------	--------	--------	--------	--------	--------	--------	--------	--------	--------	--------	--------	--------	--------	--------	--------	--------	--------	--------	--------	--------	--------	--------	--------	--------	--------	--------	--------	--------	--------	--------	--------	--------	--------	--------	--------	--------	--------	--------	--------	--------	--------	--------	--------	--------	--------	--------	--------	--------	--------	--------	--------	--------	--------	--------	--------	--------	--------	--------	--------	--------	--------	--------	--------	--------	--------	--------	--------	--------	--------	--------	--------	--------	--------	--------	--------	--------	--------	--------	--------	--------	--------	--------	--------	--------	--------	--------	--------	--------	--------	--------	--------	--------	--------	--------	--------	--------	--------	--------	--------	--------	--------	--------	--------	--------	--------	--------	--------	--------	--------	--------	--------	--------	--------	--------	--------	--------	--------	--------	--------	--------	--------	--------	--------	--------	--------	--------	--------	--------	--------	--------	--------	--------	--------	--------	--------	--------	--------	--------	--------	--------	--------	--------	--------	--------	--------	--------	--------	--------	--------	--------	--------	--------	--------	--------	--------	--------	--------	--------	--------	--------	--------	--------	--------	--------	--------	--------	--------	--------	--------	--------	--------	--------	--------	--------	--------	--------	--------	--------	--------	--------	--------	--------	--------	--------	--------	--------	--------	--------	--------	--------	--------	--------	--------	--------	--------	--------	--------	--------	--------	--------	--------	--------	--------	--------	--------	--------	--------	--------	--------	--------	--------	--------	--------	--------	--------	--------	--------	--------	--------	--------	--------	--------	--------	--------	--------	--------	--------	--------	--------	--------	--------	--------	--------	--------	--------	--------	--------	--------	--------	--------	--------	--------	--------	--------	--------	--------	--------	--------	--------	--------	--------	--------	--------	--------



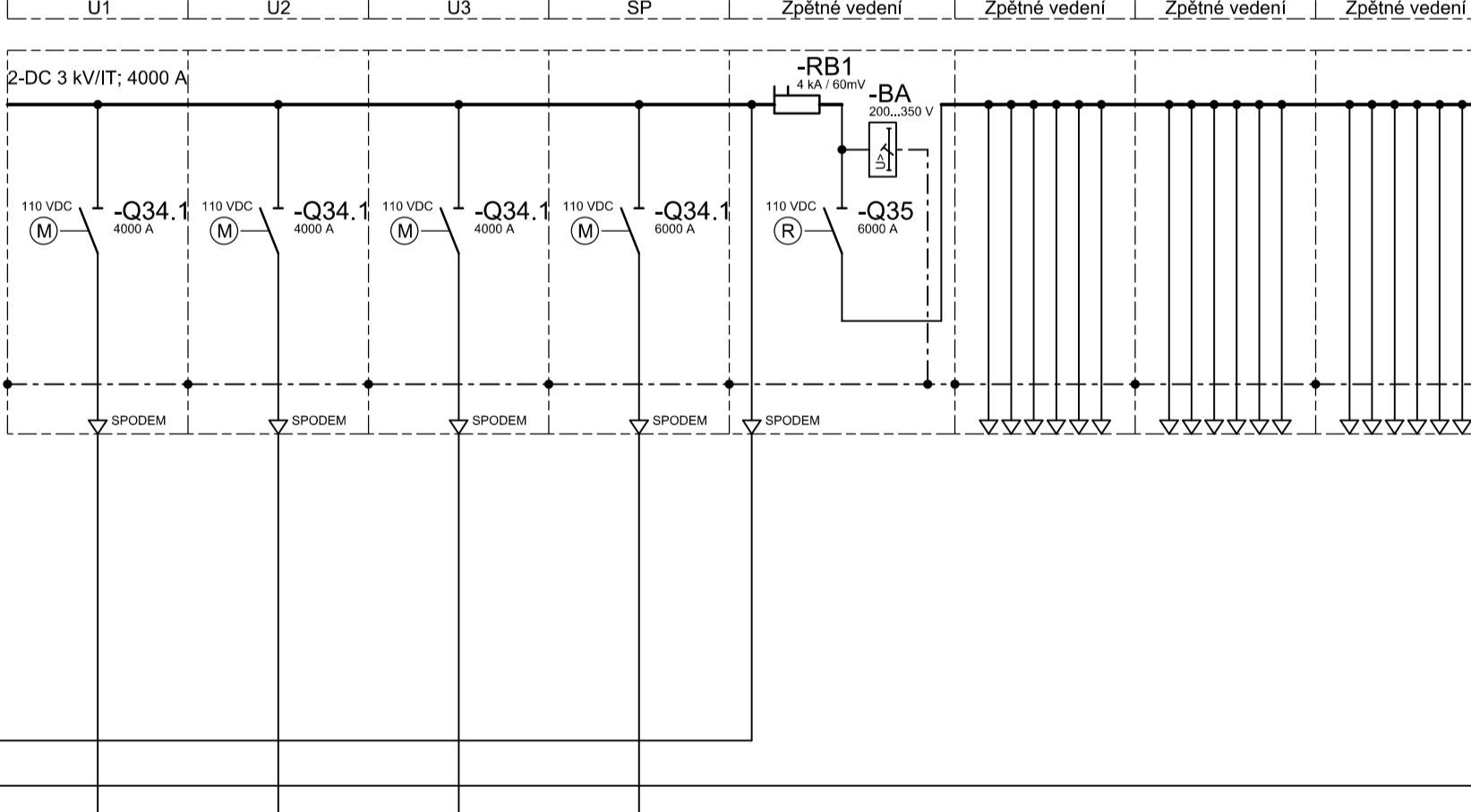
ALA1	ALA2	ALA3	ALA4	ALA5
650 x 1340 x 2533	650 x 1340 x 2533	650 x 1340 x 2533	650 x 1340 x 2533	650 x 1340 x 2533
Přívod 1	Vývod HL Nádrazí	Vývod Hokejovna	Rezerva	Speciál připojení
6P1	6V1	6V2	6V3	6V4
ASL1	ASL2	ASL3	ASL4	ASL5



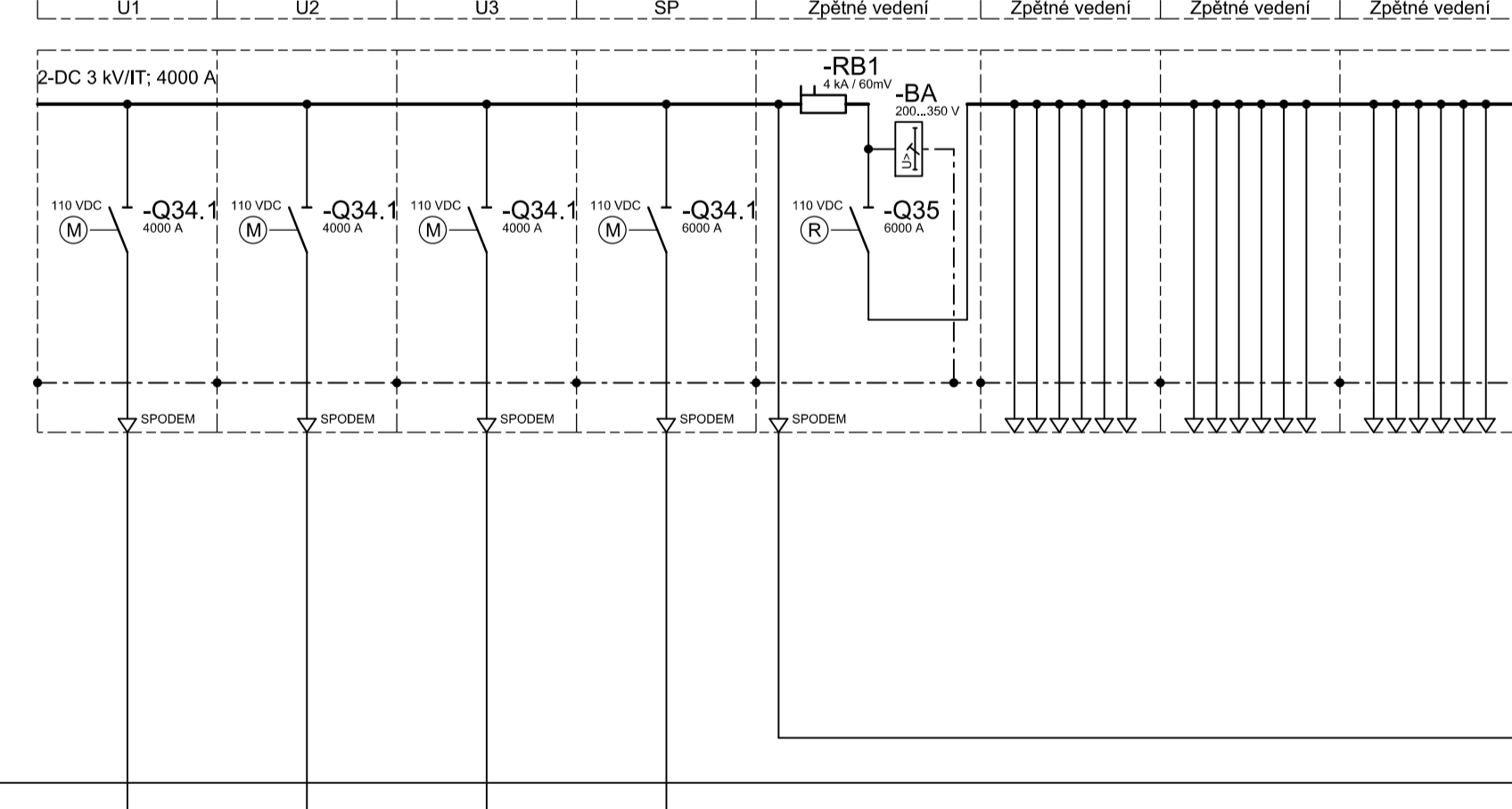
ALB1	ALB2	ALB3
Kotka	Kotka	Kotka
Kompenzace směr H, Nádrži	Kompenzace směr H, Hodejovice	Rezerva
FKZ 1	FKZ 2	FKZ 3
6V1	6V2	6V3



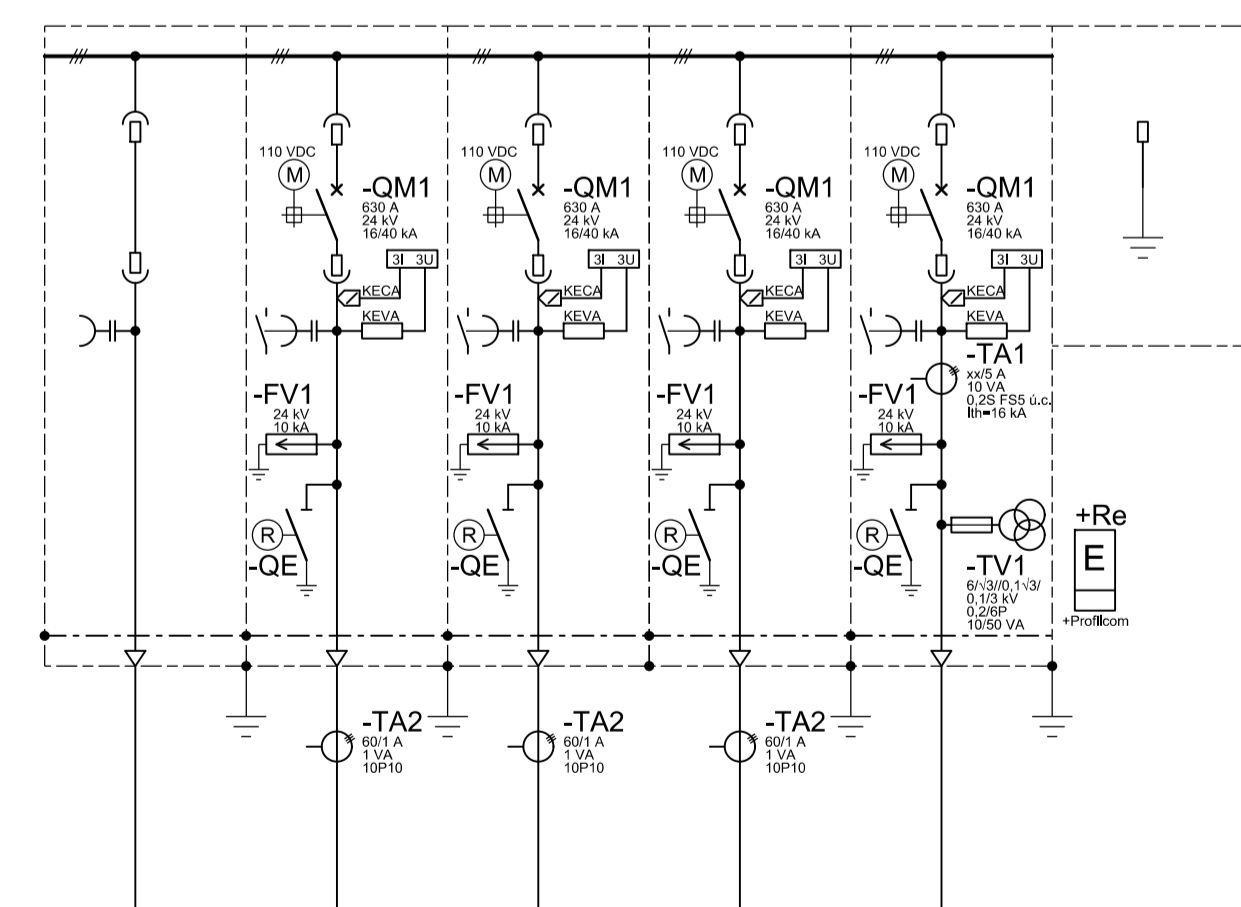
ANM1	ANM2	ANM3	ANM4	ANM5	ANM6	ANM7	ANM8
600 x 600 x 2200	600 x 600 x 2200	600 x 600 x 2200	600 x 600 x 2200	600 x 600 x 2200	600 x 600 x 2200	600 x 600 x 2200	600 x 600 x 2200
Cilindric adreksant	Cilindric adreksant	Cilindric adreksant	Dvubidnnyy smekch	Kruglyy adreksant	Cilindric	Cilindric	Cilindric



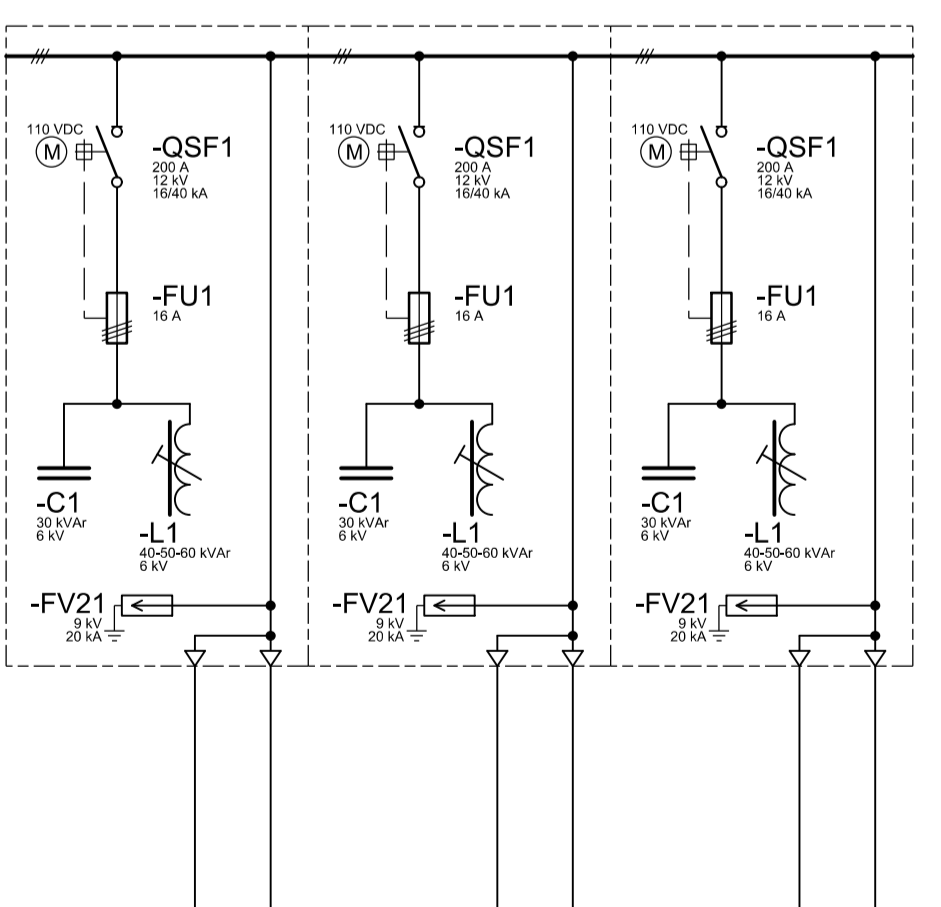
AMM1	AMM2	AMM3	AMM4	AMM5	AMM6	AMM7	AMM8
600 x 600 x 2200	600 x 600 x 2200	600 x 600 x 2200	600 x 600 x 2200	600 x 600 x 2200	600 x 600 x 2200	600 x 600 x 2200	600 x 600 x 2200
Finisje's adreksaun	Finisje's adreksaun	Finisje's adreksaun	Dendak mekane	Hilikal adreksaun	Chikane	Chikane	Chikane



ALA6	ALA7	ALA8	ALA9	ALA10	
650 x 1340 x 2533	650 x 1340 x 2533	650 x 1340 x 2533	650 x 1340 x 2533	650 x 1340 x 2533	
Místek	Výhled Libeň	Výhled Vršovice	Rezerva Malešice	Přívod 1	Uzemňovací vlník
SL6	SL7	SL8	SL9	SL10	
ASL6	ASL7	ASL8	ASL9	ASL10	



ALB1	ALB2	ALB2
Kompensacijski smisl Liban	Kompensacijski smisl Vysotary	Kompensacijski rezervni Malekion
FKZ 4	FKZ 5	FKZ 6
6V4	6V5	6V6

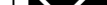


01	PO ZAPRACOVÁNÍ PŘÍPOMINEK	02/201
02	-	
03	-	






 Uloženo: 10.03.17, 11:00 PM
 Stavební správa zápa
 Sokolovská 278, 190 00 Praha

SUDOP PRAHA a.s. Orlanská 1a, 130 00 Praha 3 tel.: +420 267 094 111 www.sudop.cz

Hlavní inženýr projektu: ING. MIROSLAV NEJKLUSIL	Asistent hlavního inženýra: -
---	----------------------------------

Projektant:  **SUDOP** SUDOP PRAHA a.s.
Ořanská 1a, 130 80 Praha 3
tel. 226 221 111, fax 226 221 112

STŘEDISKO:
ELEKTROTECHNIKY, TRAKČNÍ, SDĚLOVACÍ A ZABEZPEČOVACÍ TECHNIKY

Vedúci strediska:  ING. MARTIN RABER	Odpovedný projektant SO, rD, PS:  ING. LUKÁŠ FRANC	Vypracoval:  ING. LUKÁŠ FRANC	Kontroloval:  ING. MIROSLAV NEŽUSIL
---	---	--	--

Název sídla:	Číslo směšky:
	16 029 20
	Projektový stupeň:

Zvýšení trakčního výkonu TNS, TNS Balabenka		PD
Číslo:		Datum: 12/2011

SILNOPROUDÁ TECHNOLOGIE TRAKČNÍCH NAPÁJECÍCH STANIC		Číslo částí:	
Název přílohy:		Měřítko:	Podst. formát:
			22x29,7

Číslo přílohy: _____